

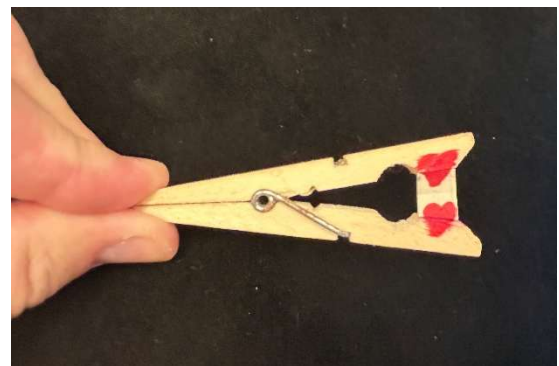
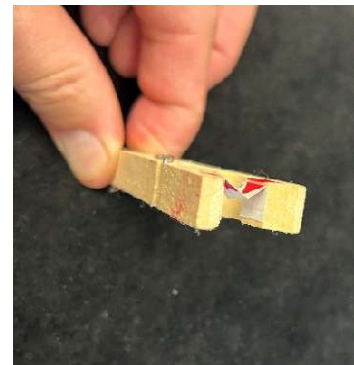
The Card Clothespin by Louie Foxx

A while ago in a social media group someone posted a video of a clothespin that had an envelope on the side of the mouth of it. When you opened it, there was a foldout inside the clothespin that had a little message. The person posted it with the caption that was something like, "I feel like there's a trick here...". Whenever I see posts like that, I always ask what they've come up with so far and I don't think anyone has ever replied with anything. This is lazy creativity. That person didn't create the prop, or a trick with it, but in the end, it fulfills their personal narrative that they are creative. It takes zero effort to do share a video and that's not being creative. Being creative is coming up with something with that prop. If you see a cool prop or idea, figure out something fun with it! Here's what I came up with the clothespin prop.

The Card Clothespin by Louie Foxx

Effect: A card is selected and tabled face down. You bring out a wooden clothespin and show it on both sides. Suddenly a heart appears on end of the clothespin and the person who picked the card confirms their card was a heart. You then open the clothespin, and the single heart turns into two hearts...and their card is revealed to be the two of hearts!

Needed: A deck of cards and a gimmicked clothespin. To make the clothes pin you will make a strip of paper that's as wide as the "mouth" of the clothespin. This strip is about 3 times as wide as the width of the clothespin. Fold this strip into quarters. You will draw the bottom of a heart on the top of the upper middle section and the top of the heart on the lower middle section. Next glue the two undrawn parts to the inside of the clothes pin. Finally draw the hearts on the side of the clothespin so that when they opened you see two complete hearts.



Set Up: The two of hearts is on top of the deck and the gimmicked clothes pin is in your pocket.

Working: You will start by forcing the two of hearts, personally I used a classic force, however you can use any force you feel comfortable with. Have them remember the card, not show it to you and set it

face down on the table.

Take the clothespin out of your pocket with the mouth away from you and the side with the heart facing down. Do the Paddle Move to show both sides of the clothespin to be blank. The Paddle Move is a basic sleight of hand where you show the same side of an object twice, however to the audience it looks like they've seen both sides. This is a standard sleight of hand technique, so I'm not going to describe it here. See the notes for a tutorial on the Paddle Move.

Hold your left hand palm up and set the clothespin onto the middle of your fingers. Make a fist as you turn your hand palm down. That keeps the blank side of the clothespin up. Now turn your fist palm up and open your fist and the audience will see the heart.

Ask them if their card was a heart, and they'll confirm it was.

Now all that's left is to gently open the clothespin and to reveal the two hearts!

Notes: I've made a tutorial for the Paddle Move as well as a closer look at the clothespin prop. To watch it simply visit my magic blog at www.magicshow.tips and click on the "vanish magazine bonus" category. The password is: vanmag